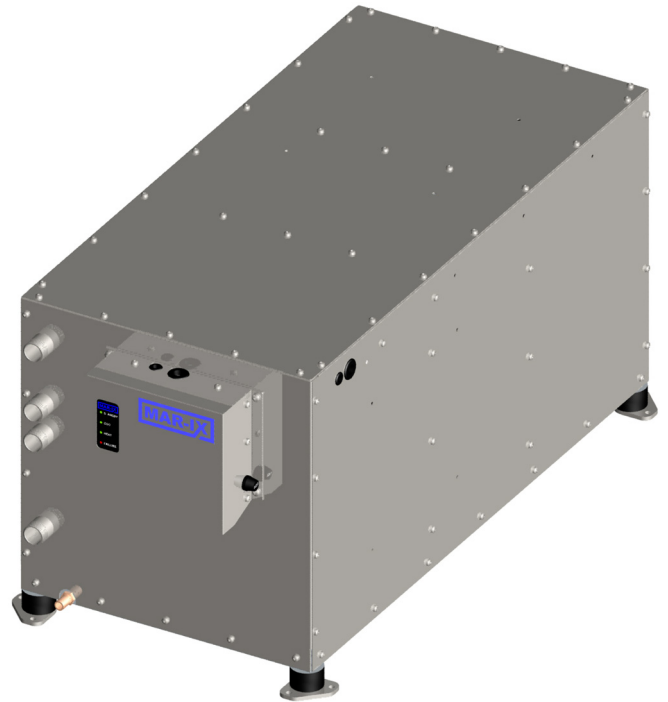


A15

An airco chiller unit A15 is a system which can be installed in the engine compartment. This chiller unit supplies a tubing circuit through the boat with cold water (glycol). This fluid flows through the fan coil units (through which air is flowing at the same time) and as a result it cools the surrounding areas. This system can cool any given area, the temperature can be controlled and adjusted separately. The sum of the capacity of the fan coil units, which have to function at the same time, results in the total capacity of the airco chiller unit. In order to install the entire unit any cool-technical know-how is not required.

A complete chiller system consists of the airco chiller unit, fan coil units and thermostats.



Voltage	Cool capacity	Refrigerant	Number of compressors	Current	Dimensions			Weight
					L	W	H	
230v 50Hz-ac and 12-24v dc	15 kW (51.200Btu)	R407C	3	15A	758 mm	387 mm	418 mm	115 kg

* 230v 60Hz-ac on request

Technical features

- Equipped with rotary compressors.
- Filled with environment friendly R407C refrigerant.
- Mainly manufactured from stainless steel.
- Sea water resistant condenser.
- Sea water resistant sea water pump.
- Standard manufactured with vibration absorbers.
- Pressure and temperature protected.
- Low current.
- Quiet operation.
- Compact system.

Standard supply

- The chiller unit.
- Manual.
- Circulation pump.
- Sea water pump.
- Sea water strainer.
- Reservoir or expansion tank.
- All required fluid connectors.
- Skin fittings.

All our systems come with 3 years full guarantee!