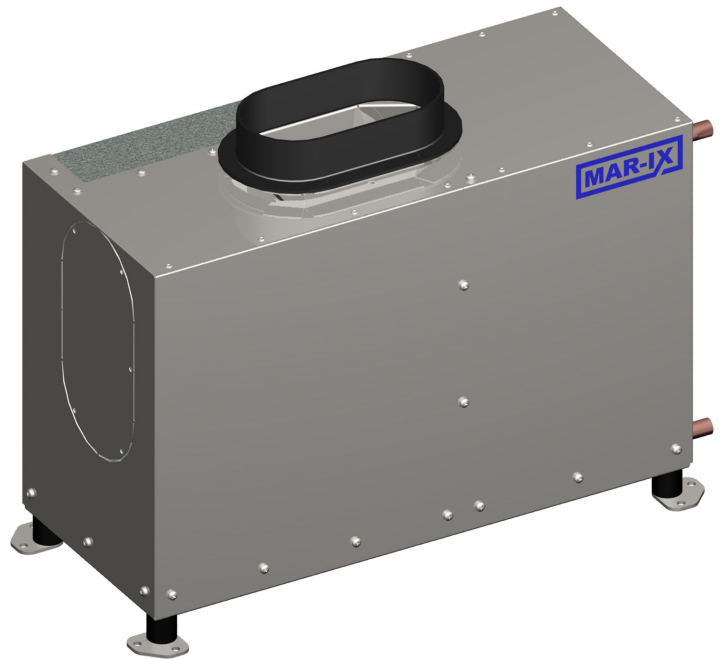


SCU3

A self contained unit SCU3 is a very compact air-conditioning system that can easily cool any given chamber. This compact system includes all cool technical components that an air-conditioning unit requires to cool a single compartment such as the seawater cooled condenser, compressor and evaporator. This unit can be easily installed in the compartment without being entirely visible. This system can be easily installed by any "do it himselfer". In order to install the entire unit any cool-technical know-how is not required. Included with this system are all basic necessary components such as the seawater pump and the thermostat. These items are required to secure a fully functioning air-conditioning system.



| Voltage | Cool capacity | Refrigerant | Current | Max. air flow | Airhose connection | Dimensions | | | Weight |
|----------------------------|------------------|-------------|---------|--------------------|--------------------|------------|--------|--------|--------|
| | | | | | | L | W | H | |
| 230v 50Hz-ac and 12-24v dc | 3 kW (10.200Btu) | R407C | 4,5A | 650 m ³ | ø 150 mm | 506 mm | 216 mm | 354 mm | 31 kg |

* 230v 60Hz-ac on request

Technical features

- Equipped with rotary compressor.
- Filled with environment friendly R407C refrigerant.
- Mainly manufactured from stainless steel.
- Sea water resistant condenser.
- Standard manufactured with vibration absorbers.
- Sea water resistant sea water pump.
- Pressure and temperature protected.
- Low current.
- Air outlet horizontally or vertically adjustable.

Standard supply

- Self contained unit.
- Sea water pump.
- Digital thermostat.
- Isolated airhose.
- Sea water strainer.
- Manual.
- Skin fittings.

All our systems come with 3 years full guarantee!